

# CleanFire 500 with 2 Pumps Installed

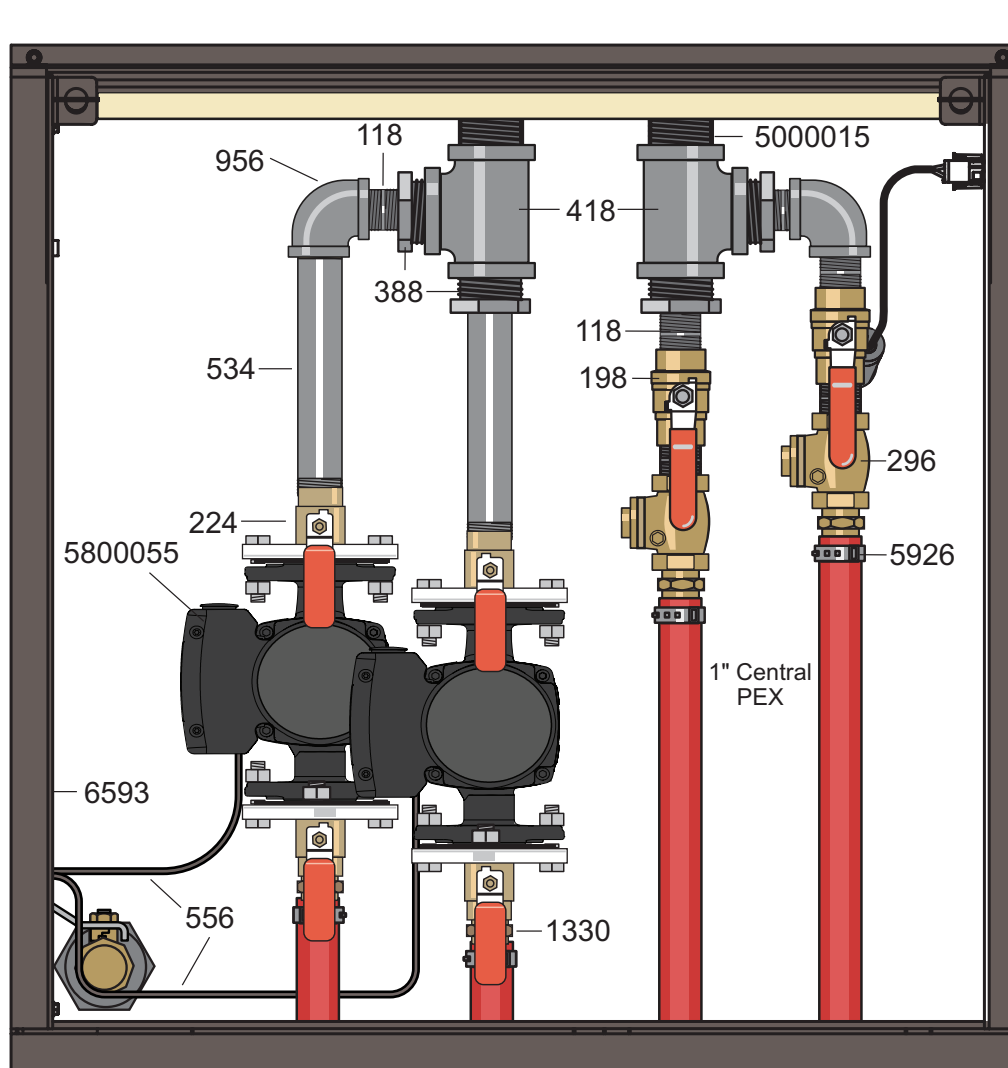
NOTE: For 2-pump installations on a CleanFire 500, installing the Pump Extension Kit (p/n 2500164) may be needed.

2 - Pump Parts List*		
Qty	p/n	Description
6	118	Close Nipple, 3/4"
2	198	Ball Valve, 3/4"
2	224	Isolation Flange Kits, 3/4"
2	296	Swing Check Valve, 3/4"
4	388	Hex Bushing, 1-1/4" x 3/4"
2	418	Tee, 1-1/4"
2	556	Power Supply Cord, 32"
4	1330	MPT to PEX, 3/4" x 1"
4	5926	Stainless Steel Clamp Crimp Ring, 1"
1	6593	Grounding Rod Kit
2	534	Black Nipple, 3/4" x 7"
2	5000015	Nipple, 1-1/4" x 2-1/2"
2	956	90° Elbow, 3/4" FPT
2	5800055	Pump, UPMS 20-58 F

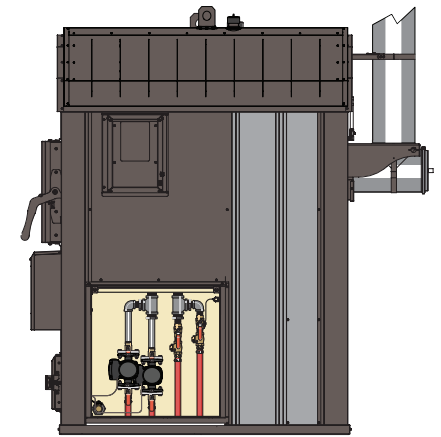
\*Parts and accessories sold separately. Pump size may vary.

## NOTE

Grounding Rod Kit (p/n 6593) must be installed with every furnace.



For illustration purposes only.



Area of Focus

